



WESTGATE  
SOUTH  
INVERURIE

AN AWARD WINNING DEVELOPMENT OF TWO, THREE, FOUR AND FIVE BEDROOM  
TRADITIONAL BUILT HOMES FROM MALCOLM ALLAN



## THE HALLFOREST W/PARKING

2 Bedroom Home

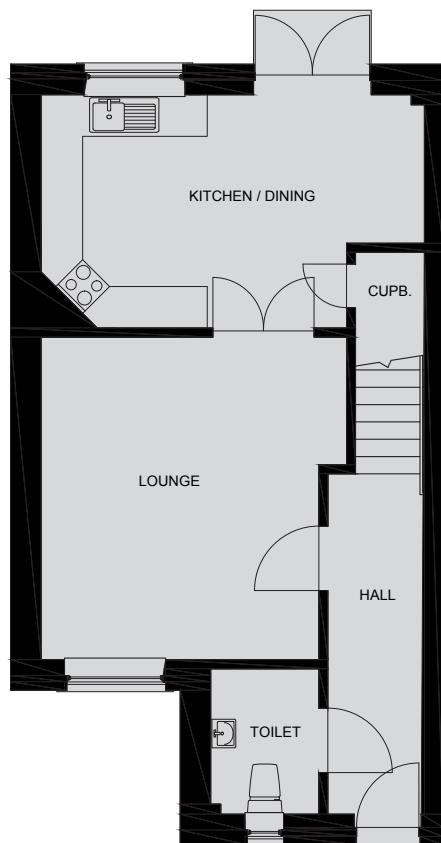


Malcolm Allan  
Housebuilders Ltd

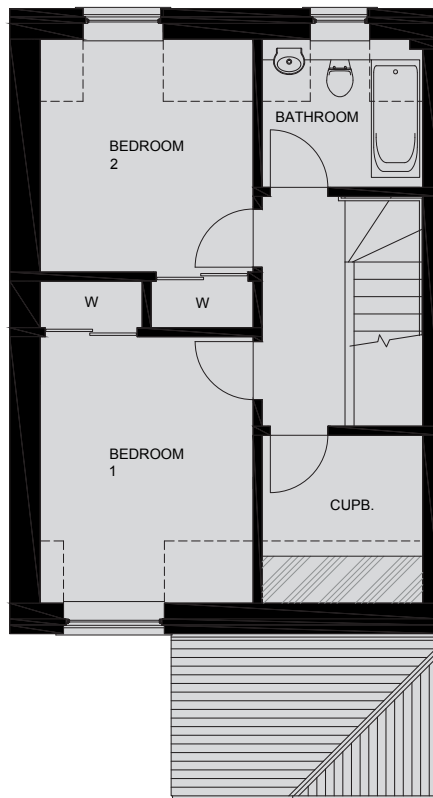
# THE HALLFOREST W/PARKING

## 2 Bedroom Home

GROUND FLOOR



FIRST FLOOR



GROUND FLOOR	METRIC	IMPERIAL	FIRST FLOOR	METRIC	IMPERIAL
LOUNGE	4.410 x 4.660	14' 6" x 15' 3"	BEDROOM 1	3.080 x 3.855	10' 1" x 12' 8"
KITCHEN/DINING ROOM	5.535 x 3.370	18' 2" x 11' 1"	BEDROOM 2	3.080 x 3.370	10' 1" x 11' 1"
TOILET	1.560 x 2.100	5' 1" x 6' 11"	BATHROOM	3.080 x 3.370	7' 8" x 7'
			CUPBOARD	2.325 x 1.750	7' 8" x 5' 9"
<b>TOTAL FLOOR AREA</b>				93.9sqm	1010.7sqf

Malcolm Allan Housebuilders Ltd reserve the right to alter the specification without prior notice and although every care has been taken to ensure the accuracy of all information given in this leaflet, the contents do not form part of or constitute a representation or warranty of any Contract.

